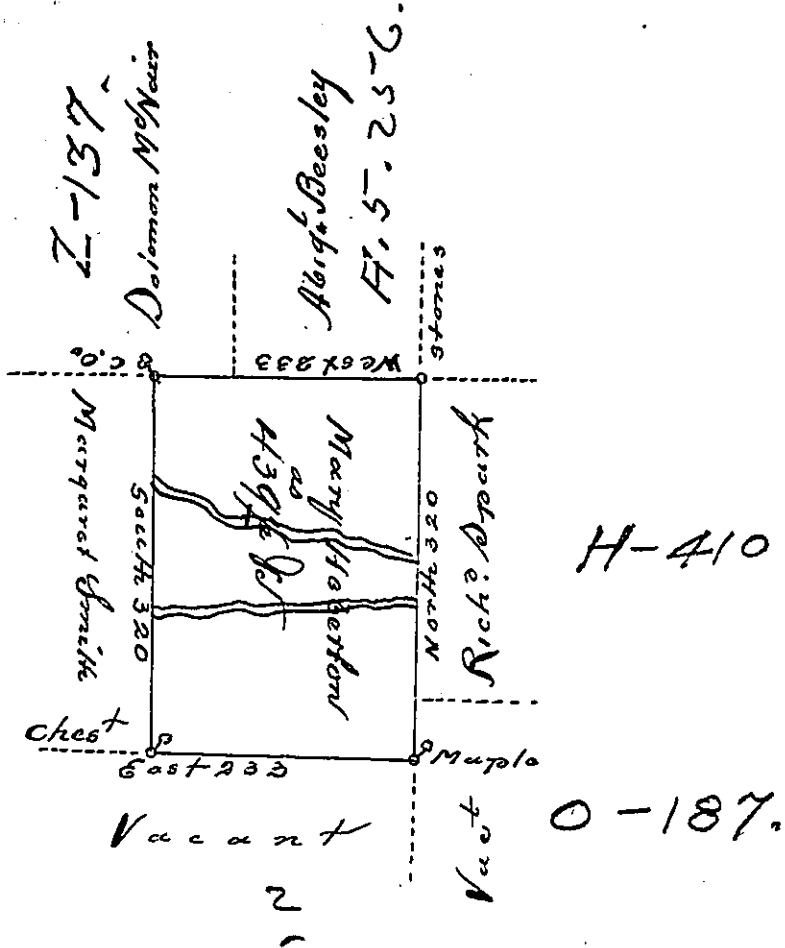


Foster -
Luzerne

Pg. 67.



A draft of a tract of land called _____ situated on the waters of
 of Leti in the County of Luzerne. Containing four hundred thirty-
 nine Acres $\frac{3}{4}$ & arrow^{ed}. Surveyed for Mary Heberton the 14th day of
 June 1793, by virtue of a Warrant dated the 24th day of Decr. 1792.

Daniel Brodhead Esq^r
 Juror Gen^l

by Wm Gray D.J.

IN TESTIMONY that the above is a copy of the original remaining on file in
 the Department of Internal Affairs of Pennsylvania, made
 conformably to an Act of Assembly approved the 16th day of
 February, 1833, I have hereunto set my Hand and caused
 the Seal of said Department to be affixed at Harrisburg,
 this 5th day of September 1899.



James W. Latta
 Secretary of Internal Affairs.